

# Elevation-In-Dent®

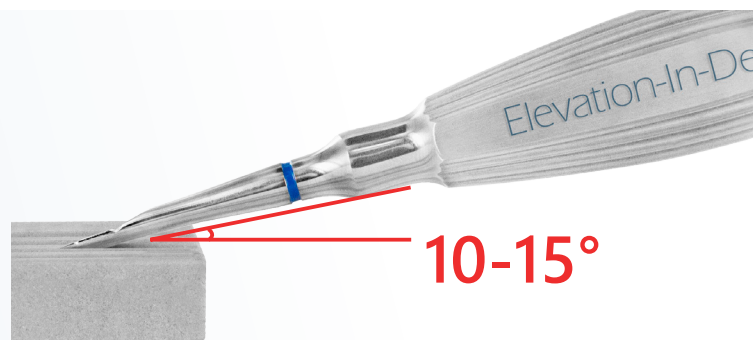
## Instrument manual and maintenance

### Keep your instruments sharp!

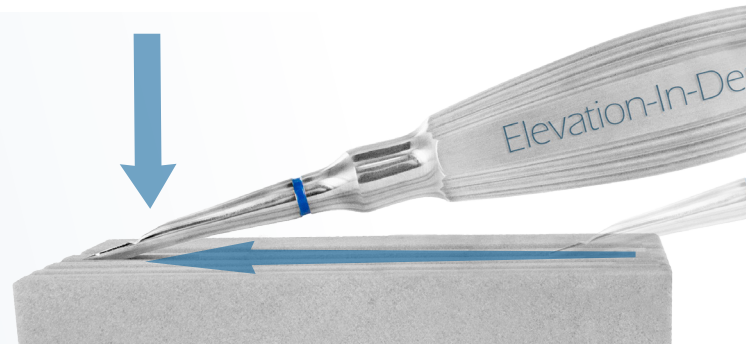
It is very important to always use sharp instruments. A blunt instrument is inefficient and pose potential danger for both patient and veterinary team. A blunt cutting edge requires more pressure, which increases strain on user and risk of slippage and potential damage to surrounding tissues. A sharp instrument secures that a faster, more efficient, safer and more ergonomical technique can be utilized.

### HOW TO SHARPEN YOUR ELEVATION-IN-DENT (3 STEPS)

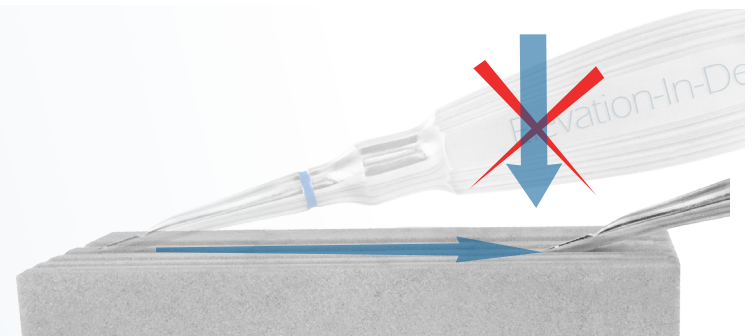
1) Hold handle with palm grip, face of blade upward and index finger on terminal shank. Choose appropriate furrow on sharpening stone. Hold 10-15° angle towards ceramic stone.

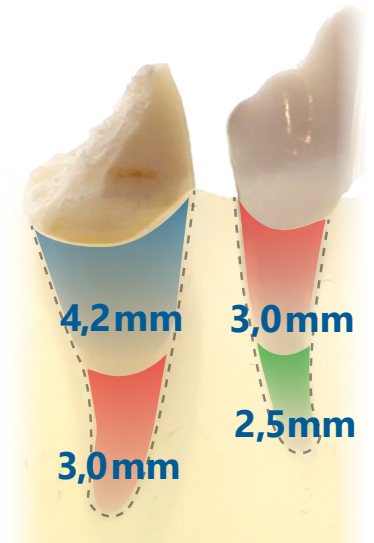
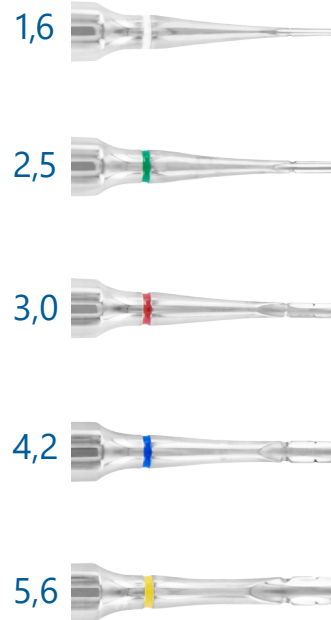
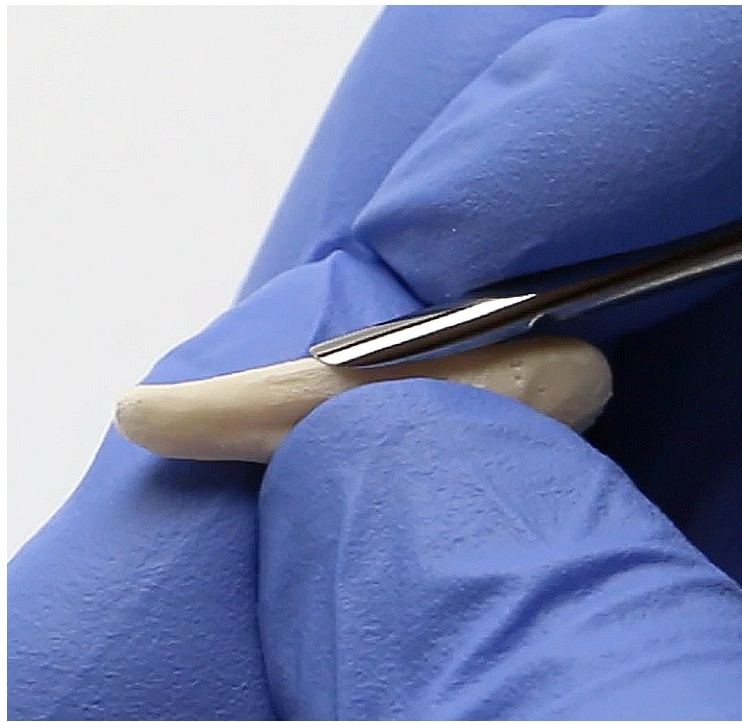


2) Whilst applying a slight pressure on the instrument advance the blade in furrow at set angle.



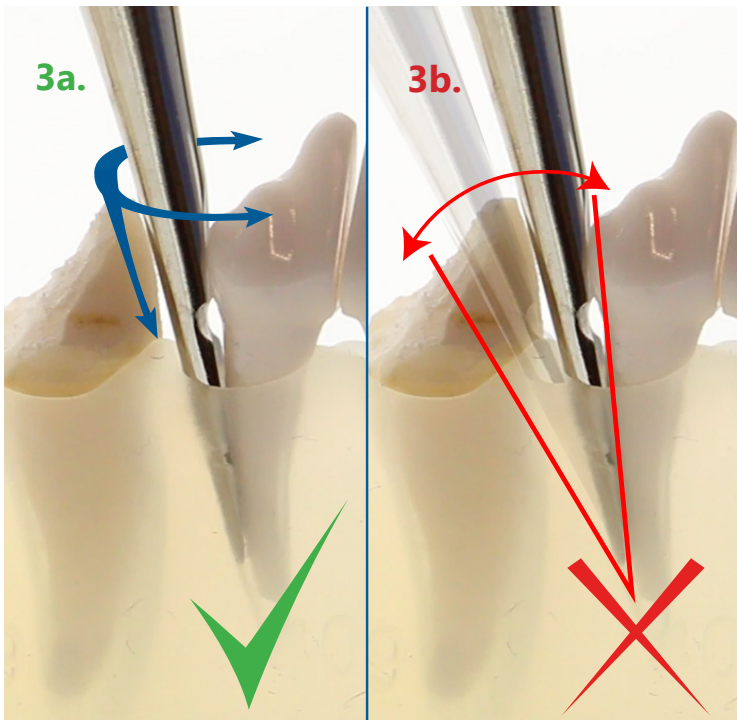
3) Return blade with no pressure to original position and repeat 8-10 times.





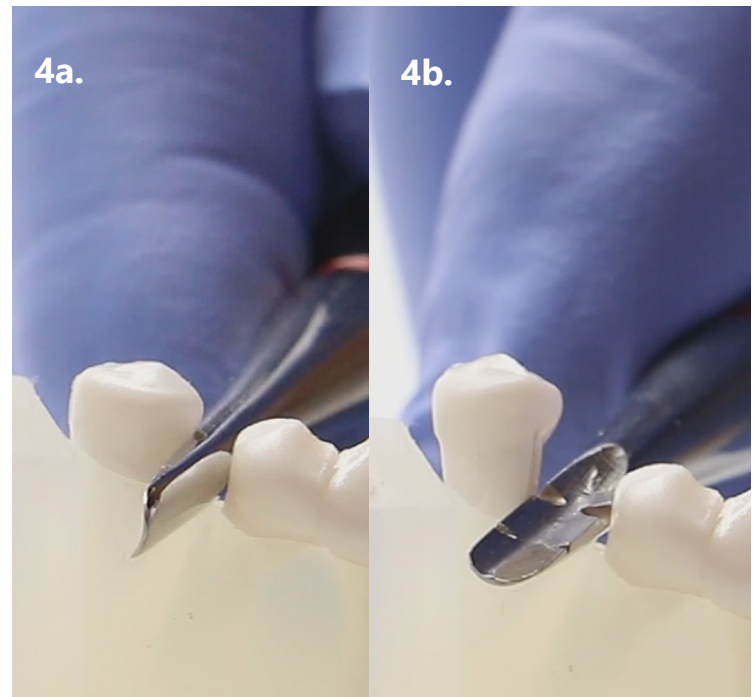
**1.** Selection of the correct size and usage of the appropriate technique is of significant importance for a successful extraction. Choose the size that fits the curvature of the root. Incorrect size selection might lead to traumatic injuries to the alveolar bone and increase the time of extraction. It also increases the risk of damages to the instrument.

**2.** Assorted Elevation-in-Dent sizes are needed for extraction of teeth. As you can see in above illustration more than one size can be necessary to extract one tooth.



#### Appropriate use of luxation technique

- 3a.** Insert your instrument (concave surface toward tooth) into the periodontal ligament space. Whilst applying light and controlled pressure in the apical direction, rotate instrument with a bidirectional technique along the tooth root.
- 3b.** **Avoid** a bending motion/movement, as it may both damage the instrument tip and/or alveolar bone. In the worst case even fracturing the tooth or jaw.



#### Appropriate use of elevation technique

- 4a.** With an appropriate palm grip introduce the instrument at the interdental space with the concave surface towards the tooth to be extracted.
- 4b.** Align notch (In-dent) with tooth neck and rotate instrument to elevate the tooth.